

Diacetonitrile(3-{2-[8-(2-bromoethoxy)-9,10-dioxoanthracen-1-yloxy]ethyl}-1-(2-pyridylmethyl)imidazolium)silver(I) bis(hexafluoridophosphate)

Qing-Song Wen, Cheng-Lin Zhou and Da-Bin Qin*

School of Chemistry and Chemical Engineering, China West Normal University, Nanchong 637002, People's Republic of China

Correspondence e-mail: qindabincwnu@yahoo.com.cn

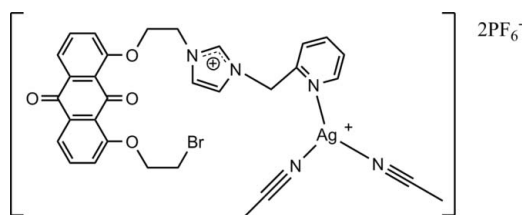
Received 8 July 2010; accepted 26 July 2010

 Key indicators: single-crystal X-ray study; $T = 116$ K; mean $\sigma(\text{C}-\text{C}) = 0.006$ Å; disorder in solvent or counterion; R factor = 0.053; wR factor = 0.132; data-to-parameter ratio = 11.4.

The title compound, $[\text{Ag}(\text{C}_{27}\text{H}_{23}\text{BrN}_3\text{O}_4)(\text{CH}_3\text{CN})_2](\text{PF}_6)_2$, is a mononuclear salt species in which the silver(I) atom is coordinated by one ligand and two acetonitrile molecules and exhibits a distorted T-shaped coordination. The asymmetric unit contains one independent cation and two independent hexafluoridophosphate anions, one of which is disordered over two positions in a 0.756 (11):0.244 (11) ratio. Weak $\pi-\pi$ interactions between the anthraquinone ring systems [centroid-centroid distance = 3.676 (3) Å], intermolecular $\text{Ag}-\pi$ interactions [$\text{Cg} \cdots \text{Ag} = 3.405$ Å] and $\text{C}-\text{H} \cdots \pi$ interactions between pairs of adjacent molecules are observed.

Related literature

For the synthesis of 1,8-bis(2-bromoethoxy)anthraquinone, see: Chen *et al.* (1992) and of 2-[(1*H*-imidazol-1-yl)methyl]pyridine, see: Chiu *et al.* (2005). For related structures, see: Mahajan *et al.* (2001, 2002). For $\text{Ag}-\pi$ interactions, see: Mascal *et al.* (2000).



Experimental

Crystal data

$[\text{Ag}(\text{C}_{27}\text{H}_{23}\text{BrN}_3\text{O}_4)(\text{C}_2\text{H}_3\text{N})_2](\text{PF}_6)_2$
 $M_r = 1013.31$
 Triclinic, $P\bar{1}$
 $a = 7.961$ (3) Å

$b = 12.826$ (4) Å
 $c = 18.199$ (6) Å
 $\alpha = 89.034$ (14)°
 $\beta = 88.278$ (12)°
 $\gamma = 74.805$ (7)°

$V = 1792.3$ (10) Å³
 $Z = 2$
 Mo $K\alpha$ radiation

$\mu = 1.88$ mm⁻¹
 $T = 116$ K
 $0.20 \times 0.18 \times 0.16$ mm

Data collection

Bruker SMART CCD area-detector diffractometer
 Absorption correction: multi-scan (SADABS; Bruker, 2000)
 $T_{\min} = 0.706$, $T_{\max} = 0.754$
 18740 measured reflections
 6327 independent reflections
 5355 reflections with $I > 2\sigma(I)$
 $R_{\text{int}} = 0.062$

Refinement

$R[F^2 > 2\sigma(F^2)] = 0.053$
 $wR(F^2) = 0.132$
 $S = 1.07$
 6327 reflections
 554 parameters
 107 restraints
 H-atom parameters constrained
 $\Delta\rho_{\text{max}} = 0.95$ e Å⁻³
 $\Delta\rho_{\text{min}} = -1.24$ e Å⁻³

Table 1

Selected bond lengths (Å).

Ag1—N4	2.230 (4)	Ag1—N1	2.284 (4)
Ag1—N5	2.256 (4)		

Table 2

Hydrogen-bond geometry (Å, °).

Cg1 and Cg3 are the centroids of the N2/N3/C7–C9 imidazole rings and C12–C16/C25 anthraquinone rings, respectively.

$D-H \cdots A$	$D-H$	$H \cdots A$	$D \cdots A$	$D-H \cdots A$
C26—H26B ⁱ ···Cg3 ⁱ	0.97	2.98	3.845 (5)	148
C31—H31B···Cg1 ⁱⁱ	0.96	3.38	3.781 (4)	108

Symmetry codes: (i) $-x + 2, -y + 2, -z + 2$; (ii) $-x, -y + 1, -z + 1$.

Data collection: SMART (Bruker, 2000); cell refinement: SAINT (Bruker, 2000); data reduction: SAINT; program(s) used to solve structure: SHELXS97 (Sheldrick, 2008); program(s) used to refine structure: SHELXL97 (Sheldrick, 2008); molecular graphics: SHELXTL (Sheldrick, 2008); software used to prepare material for publication: SHELXL97 and PLATON (Spek, 2009).

The authors thank the Scientific Researching Fund Projects of China West Normal University (grant No. 06B003) and the Youth Fund Projects of Sichuan Educational Department (grant No. 2006B039).

Supplementary data and figures for this paper are available from the IUCr electronic archives (Reference: SI2276).

References

- Bruker (2000). SMART, SAINT and SADABS. Bruker AXS Inc., Madison, Wisconsin, USA.
- Chen, Z. H., Schall, O. F., Alcalá, M., Li, Y., Gokel, G. W. & Echegoyen, L. (1992). *J. Am. Chem. Soc.* **114**, 444–451.
- Chiu, P. L., Lai, C. L., Chang, C. F., Hu, C. H. & Lee, H. M. (2005). *Organometallics*, **24**, 6169–6178.
- Mahajan, A., Bedi, P. K., Kaur, P. & Kumar, S. (2001). *Thin Solid Films*, **398**, 82–86.
- Mahajan, A., Bedi, P. K., Kaur, P. & Kumar, S. (2002). *Thin Solid Films*, **420**, 392–397.
- Mascal, M., Kerdelhué, J. L., Blake, A. J., Cooke, P. A., Mortimer, R. J. & Teat, S. J. (2000). *Eur. J. Inorg. Chem.* pp. 485–490.
- Sheldrick, G. M. (2008). *Acta Cryst.* **A64**, 112–122.
- Spek, A. L. (2009). *Acta Cryst.* **D65**, 148–155.

supplementary materials

Acta Cryst. (2010). E66, m1030 [doi:10.1107/S1600536810029739]

Diacetonitrile(3-{2-[8-(2-bromoethoxy)-9,10-dioxoanthracen-1-yloxy]ethyl}-1-(2-pyridylmethyl)imidazolium)silver(I) bis(hexafluoridophosphate)

Q.-S. Wen, C.-L. Zhou and D.-B. Qin

Comment

Anthraquinone derivatives have attracted much attention due to their optical and photoconducting properties (Mahajan *et al.*, 2001, 2002).

The silver(I) atom is bridged by the pyridyl N-atom from one ligand and two acetonitrile molecules and exhibits distorted T shaped coordination (Table 1, Fig. 1). The imidazole rings make dihedral angles with the attached pyridine ring of 61.07 (15)° and anthraquinone ring of 44.80 (10)°. The carbonyl atoms O2 and O4 are almost coplane with the anthraquinone plane, the dihedral angle between the planes of the C23/C24/C25/O2 and C16/C17/C18/O4 fragments is 1.02 (27)°. (Fig. 1).

The crystal structure is stabilized by π - π interactions between the anthraquinone ring systems of the inversion related molecules, with a $Cg3 \cdots Cg4^i$ distance of 3.676 (3) Å, [symmetry code i: 1 - x, 2 - y, 2 - z] where $Cg3$ is the C12—C16/C25 ring centroid and $Cg4$ is the C16—C18/C23—C25 ring centroid (Fig. 2), and two adjacent molecules are bridged by $Ag \cdots \pi$ interactions involving the pyridyl rings: [$Cg2 \cdots Ag1^{ii}$ = 3.405 Å, (Fig. 2). $Cg2$ is the N1/C1—C5 ring centroid, symmetry code ii: 1 - x, 1 - y, 1 - z]. The present values are thus outside the range of Ag-centroid distances of 2.89–3.37 Å (Mascal *et al.*, 2000). Besides, the structure is further stabilized by C—H \cdots π intermolecular interactions involving the ethoxy carbon C26 and one of the anthraquinone rings [$H26B \cdots Cg3^{iii}$ = 2.98 Å, $C26—H26B \cdots Cg3^{iii}$ = 148°, and a weaker contact between one of the acetonitrile donors and the imidazole ring is observed $H31B \cdots Cg1^{iv}$ = 3.38 Å, $C31—H31B \cdots Cg1^{iv}$ = 108°. $Cg1$ and $Cg3$ are the centroids of the N2/N3/C7—C9 imidazole rings and C12—C16/C25 anthraquinone rings]. Symmetry code for the two interactions, iii: 2 - x, 2 - y, 2 - z; iv: -x, 1 - y, 1 - z.

Experimental

1,8-Bis(2-bromoethoxy)anthraquinone (Chen *et al.*, 1992) (1.92 g, 10 mmol) was added to a solution of 2-((1*H*-imidazol-1-yl)methyl)pyridine (Chiu *et al.*, 2005) (2.48 g, 20 mmol) in 50 ml of THF. The mixture was refluxed for 48 h. The resulting precipitate was isolated and washed with THF(2 × 5 ml) and was then dissolved in methanol (20 ml). To the aqueous solution was added an excess of NH_4PF_6 resulting in a yellow precipitation. The yellow solid was collected and washed with water and Et_2O and dried under vacuum. The title compound was synthesized from the reaction of a slurry of Ag_2O (64 mg, 0.275 mmol) in 10 ml of acetonitrile was treated with the yellow solid (213 mg, 0.50 mmol). The mixture was stirred for 12 h with exclusion of light at 323 K until nearly all Ag_2O was dissolved. The filtrate was concentrated to ca 2 ml. Addition of Et_2O (20 ml) to the filtrate yielded a yellow solid. Yellow single crystals suitable for X-ray diffraction were obtained by recrystallization from acetonitrile.

Refinement

H atoms were placed in calculated positions with C—H = 0.93–0.97 Å, and refined in riding mode with $U_{\text{iso}}(\text{H}) = 1.2U_{\text{eq}}(\text{C})$, and $U_{\text{iso}}(\text{H}) = 1.5U_{\text{eq}}(\text{C})$ for the acetonitrile methyl group. In one of the hexafluorophosphate anions five F atoms were found to be disordered over two sites with occupancies 0.756 (11) and 0.244 (11). The disorder was completed with a combination of PLATON (Spek, 2009) and SHELXL97 (Sheldrick, 2008).

Figures

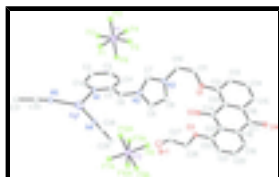


Fig. 1. The molecular structure of the title compound, showing 30% probability displacement ellipsoids and the atomic numbering. H atoms and the F7B—F12B disordered positions have been omitted.

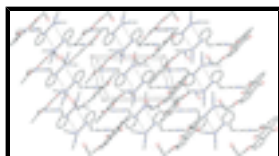


Fig. 2. A packing section of the title compound, viewed down the *c* axis, intermolecular Ag– π interactions shown with dashed lines.

Diacetonitrile(3-{2-[8-(2-bromoethoxy)-9,10-dioxoanthracen-1-yloxy]ethyl}-1-(2-pyridylmethyl)imidazolium)silver(I) bis(hexafluoridophosphate)

Crystal data

$[\text{Ag}(\text{C}_{27}\text{H}_{23}\text{BrN}_3\text{O}_4)(\text{C}_2\text{H}_3\text{N})_2](\text{PF}_6)_2$	$Z = 2$
$M_r = 1013.31$	$F(000) = 1004$
Triclinic, $P\bar{1}$	$D_x = 1.878 \text{ Mg m}^{-3}$
Hall symbol: $-P 1$	Mo $K\alpha$ radiation, $\lambda = 0.71073 \text{ \AA}$
$a = 7.961 (3) \text{ \AA}$	Cell parameters from 6148 reflections
$b = 12.826 (4) \text{ \AA}$	$\theta = 1.6\text{--}27.9^\circ$
$c = 18.199 (6) \text{ \AA}$	$\mu = 1.88 \text{ mm}^{-1}$
$\alpha = 89.034 (14)^\circ$	$T = 116 \text{ K}$
$\beta = 88.278 (12)^\circ$	Prism, colorless
$\gamma = 74.805 (7)^\circ$	$0.20 \times 0.18 \times 0.16 \text{ mm}$
$V = 1792.3 (10) \text{ \AA}^3$	

Data collection

Bruker SMART CCD area-detector diffractometer	6327 independent reflections
Radiation source: fine-focus sealed tube graphite	5355 reflections with $I > 2\sigma(I)$
Detector resolution: $14.63 \text{ pixels mm}^{-1}$	$R_{\text{int}} = 0.062$
ω and φ scans	$\theta_{\text{max}} = 25.0^\circ$, $\theta_{\text{min}} = 1.1^\circ$
	$h = -9 \rightarrow 9$

Absorption correction: multi-scan
(*SADABS*; Bruker, 2000) $k = -15 \rightarrow 15$
 $T_{\min} = 0.706$, $T_{\max} = 0.754$ $l = -21 \rightarrow 21$
18740 measured reflections

Refinement

Refinement on F^2 Secondary atom site location: difference Fourier map
Least-squares matrix: full Hydrogen site location: inferred from neighbouring sites
 $R[F^2 > 2\sigma(F^2)] = 0.053$ H-atom parameters constrained
 $wR(F^2) = 0.132$ $w = 1/[\sigma^2(F_o^2) + (0.0714P)^2]$
where $P = (F_o^2 + 2F_c^2)/3$
 $S = 1.07$ $(\Delta/\sigma)_{\max} = 0.005$
6327 reflections $\Delta\rho_{\max} = 0.95 \text{ e } \text{\AA}^{-3}$
554 parameters $\Delta\rho_{\min} = -1.24 \text{ e } \text{\AA}^{-3}$
107 restraints Extinction correction: *SHELXL97* (Sheldrick, 2008),
 $F_c^* = kFc[1+0.001xFc^2\lambda^3/\sin(2\theta)]^{-1/4}$
Primary atom site location: structure-invariant direct methods Extinction coefficient: 0.0390 (15)

Special details

Geometry. All e.s.d.'s (except the e.s.d. in the dihedral angle between two l.s. planes) are estimated using the full covariance matrix. The cell e.s.d.'s are taken into account individually in the estimation of e.s.d.'s in distances, angles and torsion angles; correlations between e.s.d.'s in cell parameters are only used when they are defined by crystal symmetry. An approximate (isotropic) treatment of cell e.s.d.'s is used for estimating e.s.d.'s involving l.s. planes.

Refinement. Refinement of F^2 against ALL reflections. The weighted R -factor wR and goodness of fit S are based on F^2 , conventional R -factors R are based on F , with F set to zero for negative F^2 . The threshold expression of $F^2 > \sigma(F^2)$ is used only for calculating R -factors(gt) *etc.* and is not relevant to the choice of reflections for refinement. R -factors based on F^2 are statistically about twice as large as those based on F , and R -factors based on ALL data will be even larger.

Fractional atomic coordinates and isotropic or equivalent isotropic displacement parameters (\AA^2)

	<i>x</i>	<i>y</i>	<i>z</i>	$U_{\text{iso}}^*/U_{\text{eq}}$	Occ. (<1)
Ag1	0.81202 (5)	0.46133 (3)	0.492136 (19)	0.02593 (16)	
Br1	1.00740 (8)	0.58237 (5)	0.87898 (3)	0.0448 (2)	
P1	0.80962 (15)	0.90464 (9)	0.40606 (6)	0.0183 (3)	
P2	0.60236 (17)	0.47473 (9)	0.77493 (7)	0.0245 (3)	
F1	0.6881 (4)	0.8274 (2)	0.38733 (15)	0.0309 (6)	
F2	0.9560 (3)	0.8403 (2)	0.34916 (13)	0.0267 (6)	
F3	0.7208 (4)	0.9869 (2)	0.34205 (13)	0.0286 (6)	
F4	0.9307 (4)	0.9829 (2)	0.42395 (14)	0.0297 (6)	
F5	0.6638 (3)	0.9684 (2)	0.46379 (13)	0.0285 (6)	
F6	0.8966 (3)	0.8235 (2)	0.47089 (13)	0.0279 (6)	
F8	0.5481 (5)	0.5903 (2)	0.81166 (17)	0.0503 (9)	
F7A	0.6754 (11)	0.3596 (5)	0.7368 (4)	0.058 (2)	0.756 (11)

supplementary materials

F9A	0.4254 (8)	0.4499 (6)	0.7960 (4)	0.0705 (19)	0.756 (11)
F10A	0.6775 (11)	0.4261 (5)	0.8501 (3)	0.0568 (18)	0.756 (11)
F11A	0.7834 (6)	0.5029 (5)	0.7539 (4)	0.0573 (17)	0.756 (11)
F12A	0.5296 (11)	0.5322 (5)	0.6986 (3)	0.062 (2)	0.756 (11)
F7B	0.590 (3)	0.3654 (15)	0.7364 (12)	0.046 (5)	0.244 (11)
F9B	0.3932 (18)	0.5058 (17)	0.7743 (11)	0.058 (5)	0.244 (11)
F10B	0.586 (2)	0.4211 (14)	0.8544 (8)	0.039 (4)	0.244 (11)
F11B	0.8056 (18)	0.439 (2)	0.7781 (11)	0.077 (5)	0.244 (11)
F12B	0.621 (3)	0.5124 (16)	0.6922 (8)	0.049 (5)	0.244 (11)
O1	0.6449 (4)	1.0682 (2)	0.82082 (15)	0.0216 (7)	
O2	0.8220 (5)	0.9164 (3)	0.90418 (16)	0.0362 (9)	
O3	1.0398 (4)	0.7780 (2)	0.98270 (16)	0.0257 (7)	
O4	0.5994 (5)	1.1618 (3)	1.14206 (18)	0.0418 (9)	
N1	0.5981 (5)	0.6198 (3)	0.49115 (18)	0.0183 (8)	
N2	0.7119 (5)	0.7748 (3)	0.64378 (18)	0.0175 (8)	
N3	0.7046 (5)	0.9302 (3)	0.68965 (18)	0.0183 (8)	
N4	0.9818 (5)	0.4191 (3)	0.5892 (2)	0.0250 (9)	
N5	0.8324 (5)	0.3673 (3)	0.3871 (2)	0.0269 (9)	
C1	0.4750 (6)	0.6286 (4)	0.4402 (2)	0.0221 (10)	
H1	0.4891	0.5739	0.4058	0.027*	
C2	0.3295 (6)	0.7149 (4)	0.4368 (2)	0.0234 (10)	
H2	0.2485	0.7193	0.4003	0.028*	
C3	0.3068 (6)	0.7957 (3)	0.4897 (2)	0.0232 (10)	
H3	0.2086	0.8541	0.4898	0.028*	
C4	0.4321 (6)	0.7873 (3)	0.5416 (2)	0.0199 (9)	
H4	0.4192	0.8401	0.5772	0.024*	
C5	0.5769 (6)	0.7000 (3)	0.5405 (2)	0.0176 (9)	
C6	0.7295 (6)	0.6862 (3)	0.5915 (2)	0.0202 (9)	
H6A	0.7429	0.6192	0.6189	0.024*	
H6B	0.8349	0.6799	0.5618	0.024*	
C7	0.7110 (6)	0.8763 (3)	0.6279 (2)	0.0210 (10)	
H7	0.7143	0.9050	0.5808	0.025*	
C8	0.7039 (7)	0.8602 (4)	0.7485 (2)	0.0261 (11)	
H8	0.7017	0.8767	0.7981	0.031*	
C9	0.7073 (6)	0.7634 (4)	0.7195 (2)	0.0240 (10)	
H9	0.7065	0.7006	0.7456	0.029*	
C10	0.7066 (7)	1.0449 (3)	0.6937 (2)	0.0241 (10)	
H10A	0.6794	1.0784	0.6458	0.029*	
H10B	0.8232	1.0484	0.7051	0.029*	
C11	0.5801 (6)	1.1092 (3)	0.7502 (2)	0.0237 (10)	
H11A	0.5744	1.1855	0.7456	0.028*	
H11B	0.4644	1.0997	0.7439	0.028*	
C12	0.5707 (6)	1.1236 (3)	0.8828 (2)	0.0196 (9)	
C13	0.4385 (6)	1.2174 (3)	0.8799 (3)	0.0246 (10)	
H13	0.3939	1.2440	0.8347	0.030*	
C14	0.3706 (6)	1.2731 (4)	0.9440 (3)	0.0286 (11)	
H14	0.2796	1.3356	0.9415	0.034*	
C15	0.4388 (6)	1.2352 (4)	1.0106 (3)	0.0299 (11)	
H15	0.3952	1.2729	1.0532	0.036*	

C16	0.5722 (6)	1.1412 (4)	1.0147 (2)	0.0230 (10)
C17	0.6479 (6)	1.1053 (4)	1.0879 (2)	0.0277 (11)
C18	0.7802 (6)	1.0009 (4)	1.0945 (2)	0.0245 (10)
C19	0.8386 (7)	0.9673 (4)	1.1646 (2)	0.0303 (12)
H19	0.7945	1.0098	1.2052	0.036*
C20	0.9628 (7)	0.8701 (4)	1.1732 (2)	0.0310 (12)
H20	1.0008	0.8475	1.2201	0.037*
C21	1.0319 (7)	0.8060 (4)	1.1136 (2)	0.0279 (11)
H21	1.1157	0.7410	1.1204	0.033*
C22	0.9738 (6)	0.8400 (4)	1.0423 (2)	0.0206 (10)
C23	0.8463 (6)	0.9375 (3)	1.0320 (2)	0.0206 (10)
C24	0.7757 (6)	0.9741 (3)	0.9574 (2)	0.0198 (10)
C25	0.6409 (6)	1.0806 (3)	0.9513 (2)	0.0193 (9)
C26	1.1559 (6)	0.6745 (4)	0.9962 (2)	0.0276 (11)
H26A	1.0995	0.6313	1.0277	0.033*
H26B	1.2590	0.6824	1.0203	0.033*
C27	1.2049 (7)	0.6212 (4)	0.9225 (3)	0.0335 (12)
H27A	1.2995	0.5566	0.9285	0.040*
H27B	1.2456	0.6700	0.8895	0.040*
C28	1.0521 (6)	0.3993 (3)	0.6423 (3)	0.0216 (10)
C29	1.1464 (7)	0.3739 (4)	0.7117 (3)	0.0310 (11)
H29A	1.2696	0.3538	0.7012	0.046*
H29B	1.1138	0.3150	0.7363	0.046*
H29C	1.1172	0.4362	0.7427	0.046*
C30	0.8236 (6)	0.3136 (4)	0.3397 (3)	0.0266 (11)
C31	0.8093 (7)	0.2415 (4)	0.2798 (3)	0.0383 (13)
H31A	0.8302	0.1688	0.2983	0.057*
H31B	0.8938	0.2447	0.2416	0.057*
H31C	0.6945	0.2639	0.2603	0.057*

Atomic displacement parameters (\AA^2)

	U^{11}	U^{22}	U^{33}	U^{12}	U^{13}	U^{23}
Ag1	0.0270 (2)	0.0223 (2)	0.0255 (2)	-0.00068 (16)	-0.00450 (15)	-0.00217 (15)
Br1	0.0453 (4)	0.0449 (4)	0.0436 (4)	-0.0092 (3)	-0.0102 (3)	-0.0097 (3)
P1	0.0207 (6)	0.0191 (6)	0.0130 (6)	-0.0012 (5)	-0.0021 (4)	0.0012 (5)
P2	0.0289 (7)	0.0217 (6)	0.0232 (6)	-0.0068 (5)	-0.0067 (5)	0.0027 (5)
F1	0.0292 (16)	0.0306 (15)	0.0346 (15)	-0.0105 (13)	-0.0048 (12)	0.0012 (12)
F2	0.0294 (15)	0.0287 (14)	0.0195 (13)	-0.0040 (12)	0.0066 (11)	-0.0033 (11)
F3	0.0364 (16)	0.0287 (15)	0.0169 (13)	-0.0014 (12)	-0.0066 (11)	0.0089 (11)
F4	0.0333 (16)	0.0279 (14)	0.0301 (15)	-0.0107 (13)	-0.0076 (12)	-0.0040 (12)
F5	0.0312 (16)	0.0242 (14)	0.0214 (13)	0.0075 (12)	0.0056 (11)	0.0005 (11)
F6	0.0295 (15)	0.0271 (14)	0.0188 (13)	0.0073 (12)	-0.0032 (11)	0.0065 (11)
F8	0.075 (3)	0.0322 (17)	0.0439 (19)	-0.0153 (17)	0.0184 (17)	-0.0086 (14)
F7A	0.101 (5)	0.025 (2)	0.048 (3)	-0.019 (3)	0.016 (4)	-0.014 (2)
F9A	0.052 (3)	0.069 (4)	0.104 (4)	-0.041 (3)	0.001 (3)	0.003 (4)
F10A	0.081 (5)	0.047 (3)	0.039 (3)	-0.008 (3)	-0.029 (3)	0.017 (2)
F11A	0.031 (3)	0.039 (3)	0.101 (4)	-0.010 (2)	0.021 (2)	-0.008 (3)

supplementary materials

F12A	0.100 (5)	0.045 (3)	0.030 (3)	0.003 (3)	-0.032 (3)	0.003 (2)
F7B	0.077 (9)	0.025 (6)	0.040 (7)	-0.020 (7)	-0.004 (8)	-0.006 (5)
F9B	0.039 (7)	0.064 (9)	0.073 (8)	-0.015 (7)	-0.009 (6)	-0.010 (7)
F10B	0.047 (7)	0.043 (6)	0.031 (6)	-0.017 (6)	-0.002 (6)	0.007 (5)
F11B	0.056 (7)	0.086 (9)	0.084 (8)	-0.009 (7)	-0.007 (6)	0.002 (7)
F12B	0.063 (9)	0.042 (7)	0.039 (7)	-0.014 (7)	0.014 (7)	0.019 (6)
O1	0.0293 (18)	0.0182 (15)	0.0139 (15)	0.0003 (13)	-0.0081 (13)	-0.0001 (12)
O2	0.056 (2)	0.0275 (18)	0.0143 (17)	0.0098 (17)	-0.0124 (16)	-0.0040 (14)
O3	0.034 (2)	0.0247 (17)	0.0147 (15)	-0.0007 (14)	-0.0071 (13)	0.0042 (13)
O4	0.055 (3)	0.049 (2)	0.0219 (19)	-0.014 (2)	0.0068 (17)	-0.0133 (17)
N1	0.023 (2)	0.0153 (18)	0.0153 (18)	-0.0027 (15)	-0.0030 (15)	0.0011 (15)
N2	0.021 (2)	0.0151 (18)	0.0160 (18)	-0.0034 (15)	-0.0044 (15)	0.0016 (15)
N3	0.026 (2)	0.0179 (18)	0.0122 (18)	-0.0070 (16)	-0.0040 (15)	0.0020 (15)
N4	0.024 (2)	0.0193 (19)	0.029 (2)	-0.0021 (17)	-0.0014 (18)	0.0023 (17)
N5	0.029 (2)	0.029 (2)	0.022 (2)	-0.0064 (18)	-0.0064 (17)	-0.0001 (18)
C1	0.026 (3)	0.022 (2)	0.020 (2)	-0.009 (2)	-0.0059 (19)	0.0000 (19)
C2	0.022 (2)	0.027 (2)	0.023 (2)	-0.010 (2)	-0.0094 (19)	0.004 (2)
C3	0.019 (2)	0.019 (2)	0.031 (3)	-0.0040 (19)	-0.0051 (19)	0.0036 (19)
C4	0.023 (2)	0.016 (2)	0.021 (2)	-0.0057 (18)	-0.0014 (18)	-0.0008 (18)
C5	0.021 (2)	0.016 (2)	0.017 (2)	-0.0072 (18)	-0.0028 (17)	0.0023 (17)
C6	0.024 (2)	0.017 (2)	0.018 (2)	-0.0010 (18)	-0.0066 (18)	-0.0029 (18)
C7	0.028 (3)	0.023 (2)	0.012 (2)	-0.006 (2)	-0.0053 (18)	0.0029 (18)
C8	0.042 (3)	0.025 (2)	0.014 (2)	-0.013 (2)	-0.004 (2)	0.0014 (19)
C9	0.038 (3)	0.021 (2)	0.014 (2)	-0.010 (2)	-0.0018 (19)	0.0009 (18)
C10	0.043 (3)	0.017 (2)	0.015 (2)	-0.012 (2)	-0.004 (2)	0.0027 (18)
C11	0.035 (3)	0.017 (2)	0.018 (2)	-0.005 (2)	-0.0090 (19)	0.0026 (18)
C12	0.020 (2)	0.022 (2)	0.020 (2)	-0.0101 (19)	-0.0017 (18)	-0.0020 (18)
C13	0.025 (3)	0.022 (2)	0.027 (2)	-0.005 (2)	-0.003 (2)	0.001 (2)
C14	0.026 (3)	0.021 (2)	0.038 (3)	-0.005 (2)	0.002 (2)	-0.007 (2)
C15	0.031 (3)	0.028 (3)	0.031 (3)	-0.009 (2)	0.012 (2)	-0.010 (2)
C16	0.027 (3)	0.025 (2)	0.022 (2)	-0.014 (2)	0.0038 (19)	-0.0032 (19)
C17	0.033 (3)	0.033 (3)	0.021 (2)	-0.018 (2)	0.006 (2)	-0.007 (2)
C18	0.031 (3)	0.036 (3)	0.014 (2)	-0.022 (2)	0.0004 (19)	0.002 (2)
C19	0.044 (3)	0.043 (3)	0.012 (2)	-0.028 (3)	0.002 (2)	-0.004 (2)
C20	0.047 (3)	0.045 (3)	0.012 (2)	-0.032 (3)	-0.011 (2)	0.009 (2)
C21	0.034 (3)	0.034 (3)	0.021 (2)	-0.017 (2)	-0.011 (2)	0.008 (2)
C22	0.025 (3)	0.029 (2)	0.013 (2)	-0.016 (2)	-0.0044 (18)	0.0019 (18)
C23	0.026 (2)	0.025 (2)	0.016 (2)	-0.015 (2)	-0.0014 (18)	-0.0019 (18)
C24	0.026 (3)	0.023 (2)	0.013 (2)	-0.011 (2)	-0.0039 (18)	0.0018 (19)
C25	0.024 (2)	0.019 (2)	0.016 (2)	-0.0082 (19)	0.0023 (18)	-0.0031 (18)
C26	0.030 (3)	0.025 (2)	0.027 (3)	-0.006 (2)	-0.007 (2)	0.006 (2)
C27	0.029 (3)	0.034 (3)	0.035 (3)	-0.003 (2)	-0.002 (2)	-0.002 (2)
C28	0.020 (2)	0.016 (2)	0.027 (3)	-0.0017 (18)	0.001 (2)	-0.0034 (19)
C29	0.034 (3)	0.027 (3)	0.030 (3)	-0.003 (2)	-0.011 (2)	-0.002 (2)
C30	0.025 (3)	0.029 (3)	0.026 (3)	-0.007 (2)	-0.004 (2)	0.003 (2)
C31	0.048 (4)	0.033 (3)	0.032 (3)	-0.006 (3)	-0.006 (2)	-0.011 (2)

Geometric parameters (Å, °)

Ag1—N4	2.230 (4)	C6—H6A	0.9700
Ag1—N5	2.256 (4)	C6—H6B	0.9700
Ag1—N1	2.284 (4)	C7—H7	0.9300
Br1—C27	1.961 (5)	C8—C9	1.351 (6)
P1—F2	1.601 (3)	C8—H8	0.9300
P1—F1	1.602 (3)	C9—H9	0.9300
P1—F5	1.606 (3)	C10—C11	1.511 (6)
P1—F4	1.606 (3)	C10—H10A	0.9700
P1—F6	1.608 (2)	C10—H10B	0.9700
P1—F3	1.609 (3)	C11—H11A	0.9700
P2—F9A	1.560 (5)	C11—H11B	0.9700
P2—F11B	1.564 (14)	C12—C13	1.376 (6)
P2—F10A	1.563 (5)	C12—C25	1.424 (6)
P2—F7A	1.600 (6)	C13—C14	1.397 (6)
P2—F8	1.585 (3)	C13—H13	0.9300
P2—F11A	1.609 (5)	C14—C15	1.372 (7)
P2—F12A	1.612 (5)	C14—H14	0.9300
P2—F7B	1.607 (15)	C15—C16	1.385 (7)
P2—F9B	1.608 (14)	C15—H15	0.9300
P2—F10B	1.608 (13)	C16—C25	1.415 (6)
P2—F12B	1.588 (14)	C16—C17	1.494 (6)
O1—C12	1.376 (5)	C17—C18	1.476 (7)
O1—C11	1.438 (5)	C18—C19	1.394 (6)
O2—C24	1.217 (5)	C18—C23	1.414 (6)
O3—C22	1.364 (5)	C19—C20	1.382 (7)
O3—C26	1.427 (5)	C19—H19	0.9300
O4—C17	1.225 (5)	C20—C21	1.382 (7)
N1—C5	1.351 (5)	C20—H20	0.9300
N1—C1	1.351 (5)	C21—C22	1.415 (6)
N2—C7	1.326 (5)	C21—H21	0.9300
N2—C9	1.384 (5)	C22—C23	1.403 (6)
N2—C6	1.471 (5)	C23—C24	1.506 (6)
N3—C7	1.321 (5)	C24—C25	1.505 (6)
N3—C8	1.386 (5)	C26—C27	1.510 (7)
N3—C10	1.479 (5)	C26—H26A	0.9700
N4—C28	1.122 (6)	C26—H26B	0.9700
N5—C30	1.129 (6)	C27—H27A	0.9700
C1—C2	1.379 (6)	C27—H27B	0.9700
C1—H1	0.9300	C28—C29	1.476 (6)
C2—C3	1.398 (6)	C29—H29A	0.9600
C2—H2	0.9300	C29—H29B	0.9600
C3—C4	1.377 (6)	C29—H29C	0.9600
C3—H3	0.9300	C30—C31	1.467 (7)
C4—C5	1.381 (6)	C31—H31A	0.9600
C4—H4	0.9300	C31—H31B	0.9600
C5—C6	1.522 (6)	C31—H31C	0.9600

supplementary materials

N4—Ag1—N5	127.22 (14)	N2—C6—C5	114.4 (3)
N4—Ag1—N1	119.44 (13)	N2—C6—H6A	108.6
N5—Ag1—N1	113.27 (13)	C5—C6—H6A	108.6
F2—P1—F1	90.22 (15)	N2—C6—H6B	108.6
F2—P1—F5	179.42 (16)	C5—C6—H6B	108.6
F1—P1—F5	89.84 (15)	H6A—C6—H6B	107.6
F2—P1—F4	89.66 (15)	N3—C7—N2	109.3 (4)
F1—P1—F4	179.30 (16)	N3—C7—H7	125.4
F5—P1—F4	90.28 (15)	N2—C7—H7	125.4
F2—P1—F6	90.03 (14)	C9—C8—N3	106.5 (4)
F1—P1—F6	90.27 (15)	C9—C8—H8	126.8
F5—P1—F6	89.39 (14)	N3—C8—H8	126.8
F4—P1—F6	90.42 (15)	C8—C9—N2	107.4 (4)
F2—P1—F3	90.77 (14)	C8—C9—H9	126.3
F1—P1—F3	89.85 (15)	N2—C9—H9	126.3
F5—P1—F3	89.81 (14)	N3—C10—C11	114.1 (4)
F4—P1—F3	89.46 (14)	N3—C10—H10A	108.7
F6—P1—F3	179.18 (16)	C11—C10—H10A	108.7
F9A—P2—F11B	148.0 (9)	N3—C10—H10B	108.7
F9A—P2—F10A	90.0 (4)	C11—C10—H10B	108.7
F11B—P2—F10A	64.6 (8)	H10A—C10—H10B	107.6
F9A—P2—F7A	92.0 (3)	O1—C11—C10	106.2 (4)
F11B—P2—F7A	70.3 (8)	O1—C11—H11A	110.5
F10A—P2—F7A	90.5 (4)	C10—C11—H11A	110.5
F9A—P2—F8	93.4 (3)	O1—C11—H11B	110.5
F11B—P2—F8	104.5 (9)	C10—C11—H11B	110.5
F10A—P2—F8	88.7 (3)	H11A—C11—H11B	108.7
F7A—P2—F8	174.5 (4)	C13—C12—O1	122.7 (4)
F9A—P2—F11A	178.8 (3)	C13—C12—C25	120.8 (4)
F10A—P2—F11A	90.0 (3)	O1—C12—C25	116.5 (4)
F7A—P2—F11A	89.2 (3)	C12—C13—C14	120.9 (4)
F8—P2—F11A	85.4 (2)	C12—C13—H13	119.5
F9A—P2—F12A	92.6 (4)	C14—C13—H13	119.5
F11B—P2—F12A	114.0 (8)	C15—C14—C13	119.6 (5)
F10A—P2—F12A	176.0 (3)	C15—C14—H14	120.2
F7A—P2—F12A	92.5 (4)	C13—C14—H14	120.2
F8—P2—F12A	88.1 (3)	C14—C15—C16	120.4 (4)
F11A—P2—F12A	87.4 (3)	C14—C15—H15	119.8
F9A—P2—F7B	69.7 (8)	C16—C15—H15	119.8
F11B—P2—F7B	94.2 (10)	C15—C16—C25	121.7 (4)
F10A—P2—F7B	98.9 (9)	C15—C16—C17	118.6 (4)
F8—P2—F7B	161.3 (8)	C25—C16—C17	119.7 (4)
F11A—P2—F7B	111.5 (8)	O4—C17—C18	120.4 (4)
F12A—P2—F7B	84.8 (9)	O4—C17—C16	120.2 (5)
F11B—P2—F9B	177.1 (10)	C18—C17—C16	119.5 (4)
F10A—P2—F9B	113.1 (7)	C19—C18—C23	121.1 (5)
F7A—P2—F9B	108.4 (7)	C19—C18—C17	117.5 (4)
F8—P2—F9B	76.8 (7)	C23—C18—C17	121.4 (4)
F11A—P2—F9B	150.1 (8)	C20—C19—C18	119.4 (4)

F12A—P2—F9B	68.5 (7)	C20—C19—H19	120.3
F7B—P2—F9B	84.4 (9)	C18—C19—H19	120.3
F9A—P2—F10B	62.8 (6)	C19—C20—C21	121.5 (4)
F11B—P2—F10B	90.8 (9)	C19—C20—H20	119.3
F7A—P2—F10B	92.6 (7)	C21—C20—H20	119.3
F8—P2—F10B	89.2 (6)	C20—C21—C22	119.4 (5)
F11A—P2—F10B	117.2 (7)	C20—C21—H21	120.3
F12A—P2—F10B	155.0 (7)	C22—C21—H21	120.3
F7B—P2—F10B	90.0 (11)	O3—C22—C23	119.2 (4)
F9B—P2—F10B	86.7 (9)	O3—C22—C21	120.5 (4)
F9A—P2—F12B	115.1 (7)	C23—C22—C21	120.3 (4)
F11B—P2—F12B	88.7 (10)	C22—C23—C18	118.3 (4)
F10A—P2—F12B	153.3 (7)	C22—C23—C24	121.9 (4)
F7A—P2—F12B	80.1 (8)	C18—C23—C24	119.8 (4)
F8—P2—F12B	98.3 (7)	O2—C24—C25	121.3 (4)
F11A—P2—F12B	65.1 (7)	O2—C24—C23	120.4 (4)
F7B—P2—F12B	82.6 (11)	C25—C24—C23	118.3 (4)
F9B—P2—F12B	93.7 (9)	C16—C25—C12	116.6 (4)
F10B—P2—F12B	172.5 (10)	C16—C25—C24	121.0 (4)
C12—O1—C11	118.6 (3)	C12—C25—C24	122.4 (4)
C22—O3—C26	117.3 (3)	O3—C26—C27	107.0 (4)
C5—N1—C1	118.0 (4)	O3—C26—H26A	110.3
C5—N1—Ag1	125.6 (3)	C27—C26—H26A	110.3
C1—N1—Ag1	116.1 (3)	O3—C26—H26B	110.3
C7—N2—C9	108.1 (3)	C27—C26—H26B	110.3
C7—N2—C6	126.9 (4)	H26A—C26—H26B	108.6
C9—N2—C6	124.8 (3)	C26—C27—Br1	111.7 (3)
C7—N3—C8	108.7 (4)	C26—C27—H27A	109.3
C7—N3—C10	124.6 (3)	Br1—C27—H27A	109.3
C8—N3—C10	126.6 (3)	C26—C27—H27B	109.3
C28—N4—Ag1	173.0 (4)	Br1—C27—H27B	109.3
C30—N5—Ag1	169.3 (4)	H27A—C27—H27B	107.9
N1—C1—C2	123.0 (4)	N4—C28—C29	179.2 (5)
N1—C1—H1	118.5	C28—C29—H29A	109.5
C2—C1—H1	118.5	C28—C29—H29B	109.5
C1—C2—C3	118.3 (4)	H29A—C29—H29B	109.5
C1—C2—H2	120.8	C28—C29—H29C	109.5
C3—C2—H2	120.8	H29A—C29—H29C	109.5
C4—C3—C2	118.9 (4)	H29B—C29—H29C	109.5
C4—C3—H3	120.5	N5—C30—C31	178.0 (5)
C2—C3—H3	120.5	C30—C31—H31A	109.5
C3—C4—C5	119.7 (4)	C30—C31—H31B	109.5
C3—C4—H4	120.2	H31A—C31—H31B	109.5
C5—C4—H4	120.2	C30—C31—H31C	109.5
N1—C5—C4	122.1 (4)	H31A—C31—H31C	109.5
N1—C5—C6	113.6 (4)	H31B—C31—H31C	109.5
C4—C5—C6	124.3 (4)		
N4—Ag1—N1—C5	9.4 (4)	C15—C16—C17—O4	-4.4 (7)
N5—Ag1—N1—C5	-167.7 (3)	C25—C16—C17—O4	173.9 (4)

supplementary materials

N4—Ag1—N1—C1	-164.6 (3)	C15—C16—C17—C18	175.1 (4)
N5—Ag1—N1—C1	18.2 (3)	C25—C16—C17—C18	-6.6 (6)
N5—Ag1—N4—C28	-129 (3)	O4—C17—C18—C19	3.7 (7)
N1—Ag1—N4—C28	55 (3)	C16—C17—C18—C19	-175.8 (4)
N4—Ag1—N5—C30	96 (2)	O4—C17—C18—C23	-175.9 (4)
N1—Ag1—N5—C30	-87 (2)	C16—C17—C18—C23	4.6 (6)
C5—N1—C1—C2	-0.4 (6)	C23—C18—C19—C20	-0.2 (7)
Ag1—N1—C1—C2	174.1 (3)	C17—C18—C19—C20	-179.8 (4)
N1—C1—C2—C3	-1.5 (7)	C18—C19—C20—C21	0.7 (7)
C1—C2—C3—C4	1.6 (6)	C19—C20—C21—C22	-0.3 (7)
C2—C3—C4—C5	0.1 (6)	C26—O3—C22—C23	-173.8 (4)
C1—N1—C5—C4	2.2 (6)	C26—O3—C22—C21	5.6 (6)
Ag1—N1—C5—C4	-171.7 (3)	C20—C21—C22—O3	-179.9 (4)
C1—N1—C5—C6	-175.5 (4)	C20—C21—C22—C23	-0.5 (6)
Ag1—N1—C5—C6	10.5 (5)	O3—C22—C23—C18	-179.7 (4)
C3—C4—C5—N1	-2.1 (6)	C21—C22—C23—C18	0.9 (6)
C3—C4—C5—C6	175.4 (4)	O3—C22—C23—C24	2.1 (6)
C7—N2—C6—C5	-66.6 (6)	C21—C22—C23—C24	-177.3 (4)
C9—N2—C6—C5	118.8 (4)	C19—C18—C23—C22	-0.6 (6)
N1—C5—C6—N2	177.8 (4)	C17—C18—C23—C22	179.0 (4)
C4—C5—C6—N2	0.1 (6)	C19—C18—C23—C24	177.7 (4)
C8—N3—C7—N2	0.9 (5)	C17—C18—C23—C24	-2.7 (6)
C10—N3—C7—N2	178.2 (4)	C22—C23—C24—O2	3.8 (7)
C9—N2—C7—N3	-0.5 (5)	C18—C23—C24—O2	-174.5 (4)
C6—N2—C7—N3	-175.8 (4)	C22—C23—C24—C25	-179.1 (4)
C7—N3—C8—C9	-1.0 (5)	C18—C23—C24—C25	2.6 (6)
C10—N3—C8—C9	-178.2 (4)	C15—C16—C25—C12	2.5 (6)
N3—C8—C9—N2	0.7 (5)	C17—C16—C25—C12	-175.8 (4)
C7—N2—C9—C8	-0.1 (5)	C15—C16—C25—C24	-175.0 (4)
C6—N2—C9—C8	175.3 (4)	C17—C16—C25—C24	6.7 (6)
C7—N3—C10—C11	137.8 (4)	C13—C12—C25—C16	-2.2 (6)
C8—N3—C10—C11	-45.3 (6)	O1—C12—C25—C16	176.1 (4)
C12—O1—C11—C10	169.7 (3)	C13—C12—C25—C24	175.2 (4)
N3—C10—C11—O1	68.5 (5)	O1—C12—C25—C24	-6.5 (6)
C11—O1—C12—C13	-0.9 (6)	O2—C24—C25—C16	172.3 (4)
C11—O1—C12—C25	-179.2 (4)	C23—C24—C25—C16	-4.8 (6)
O1—C12—C13—C14	-177.9 (4)	O2—C24—C25—C12	-5.0 (7)
C25—C12—C13—C14	0.4 (7)	C23—C24—C25—C12	177.9 (4)
C12—C13—C14—C15	1.4 (7)	C22—O3—C26—C27	178.1 (4)
C13—C14—C15—C16	-1.1 (7)	O3—C26—C27—Br1	-69.2 (4)
C14—C15—C16—C25	-0.8 (7)	Ag1—N4—C28—C29	-146 (40)
C14—C15—C16—C17	177.5 (4)	Ag1—N5—C30—C31	-17 (17)

Hydrogen-bond geometry (\AA , $^\circ$)

Cg1 and Cg3 are the centroids of the N2/N3/C7–C9 imidazole rings and C12–C16/C25 anthraquinone rings, respectively.

$D-H\cdots A$	$D-H$	$H\cdots A$	$D\cdots A$	$D-H\cdots A$
C26—H26B \cdots Cg3 ⁱ	0.97	2.98	3.845 (5)	148

C31—H31B...Cg1ⁱⁱ

0.96

3.38

3.781 (4)

108

Symmetry codes: (i) $-x+2, -y+2, -z+2$; (ii) $-x, -y+1, -z+1$.

Fig. 1

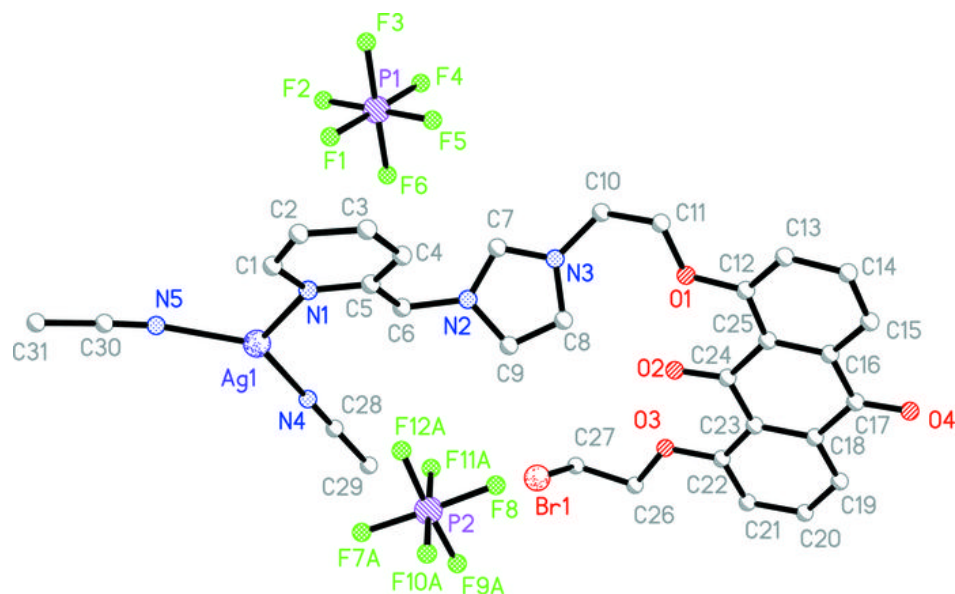


Fig. 2

